

#### Items Needed:

1mm cardboard  
1 small plastic straw  
1 junior light tampon tube  
PVA glue or Elmers glue  
super glue  
hobby knife (sharp)  
scissor

Legend: Solid lines are cut marks and score marks. In general the cut marks are on the edges and the score marks are contained inside each piece. The dotted lines are place markers for pieces being placed (glued) into position on other items. All blacked in areas need to be cut out and left as holes.

FYI: this piece utilizes a lot of layering of 1mm cardboard so be advised.

1. Print out all templates and paste onto the cardboard (1mm). Note each piece that needs multiples is marked by an "x" followed by a number indicating how many duplicates of this piece needs to be made.

2. Cut out the pieces as you use them. This helps keep things organized.

3. First start by cutting out the Rings A-D. These need to be glued (with Elmers glue) in order from A (on the bottom) to D (on the top) the slits must be aligned. **DO NOT FILL THE SLITS WITH GLUE!**  
See Sample 1

4. While the rings are drying cut out the pieces for the base. Base A is the center point, glue Base I to the edge of Base A overlapping the top of the "T" about 1mm. See sample B.

5. Now glue Base M in between and under all the Base I's to complete the circle. Add the Base L's to the ends of the Base M's overlapping the edge by 3mm. Let this dry.

6. Let's complete the rings. Cut out the Rings E, be sure to keep the cuts as clean as possible. Glue (super glue) these to the inside semicircle of one side of the rings. As you can see 1 length is not long enough to complete the enclosure. Take a second strip and butt it to first then glue it into place. Continue this until you complete the enclosure, cut off the excess.

7. Now follow the same process for the other side of the ring but do it for outside semi circle. Let this dry.

8. Cut out Base C, D and E. Glue (Elmers) all 4 pieces of Base C together layering these on top of each other. Now glue Base D on top of Base C and cut off excess. Now glue Base E on top of Base D. Now cut out a 6mm piece of the tampon tube and glue it into the hole on Base E. Get a piece of scrap cardboard and cut a 10mm strip and make a tube that will fit snugly into the hole on Base. Glue this tube to bottom side of Base C. Let this dry.

9. Now glue sides of the Rings together. Let this dry. This should complete the rings section except for the ends. We'll do those last.

10. Back to the Base A. Now take round pen and bend all the base legs around the pen. This should

put a curve into them. Now cut out and glue Base J, L and N's. Base J glues to the sides of Base I. Base L glues to the sides of Base K and Base N glues to the side of Base M.

11. Cut out and glue the circle of Base B over Base A. Now add all the detail cuts to the base. See Sample C.

12. Cut out Base F and G. Base F makes a rectangular box that glues to the side of Base C with the tampon tube. Lay the box on the longest and thinnest edge and glue into position. One box on each half. Base G makes a half box. This glues to the side of Base F. See Sample D.

13. Now slip Base C into the hole on Base A. On the bottom side you'll need to glue 2 pieces cardboard to the tube as snug up to the bottom of Base A to keep the tube from sliding out. This should complete the base. Base C should be able to rotate while Base A stay stationary. If not you've just lost one cool feature of the pylon.

14. Now cut Base H and all it's components. The long piece should be scored and bent to make a bracket. The second set of polygons with the black line in the middle needs to be cut and separated. These get glued on the inside of the bracket with a 1mm space between both sections. The 3mm rectangle gets glued in the 1mm slot. Let this dry. See Sample E

15. Very carefully push Base H into the slots on the Rings. Base H should be able to slide from one end of the rings to the other end. Now glue the back side of the rings to the top of the rectangles created by Base F. Support this until the glue dries. Almost done.

16. Cut out Jewel Bracket A. Score the inside lines. Find the center of the semi circle on the rings and glue this bracket into place. Be careful not to let any glue overflow into the slits of the rings as this will muck up the sliding feature.

17. Cut out Jewel Bracket B and C and glue into position on Jewel Bracket A. Now cut out a 20mm piece of the tampon tube and glue into position on Jewel Bracket C. See Sample F.

18. Cut Jewel Bracket I and wrap and glue the 3 long strips around the top, middle and bottom of the tampon tube. Cut off excess. Glue the 4 smaller strips in between the 2 edges near the bottom around the tube at quarter intervals. See Sample F again.

19. Cut out the jewel and glue together. When this is dry glue it to the end of the tampon tube with the longer end facing out. Now cut 10 mm length of tampon tube and cut out 4 squares at one end in quarter intervals to make it look like a kings crown. Glue this to the other side of the jewel with the blocky edge going around the jewel. Seal off the end of the tube with a scrap piece of cardboard and cut off the excess. See Sample G.

20. Cut off a piece of straw about 5mm length and glue this to the closed off end of the tube. See Sample G again.

21. Cut out Jewel Brackets D-H. These get glued together to make the desired thickness. The 3 Jewel Bracket Ds get glued together for the middle part. Jewel Bracket E gets glued to the outside of Jewel Bracket D. Jewel Bracket F gets glued on the inside/bottom of this piece. See Sample F again.

21 continued. Jewel Bracket G get glued on top as a detail piece. This whole piece gets glued on either side of Jewel Bracket A.

22. Jewel Bracket H gets glued in the middle open space left on Jewel Bracket F. See Sample F again. The top end get glued to the top end of the Jewel. See Sample G again.

23. Cut out Jewel Bracket L this piece should be self explanatory. Glue all the edges together to make a box like piece. but on the inside curve glue the strip halfway inside the bracket. Now glue all the little boxes on the inside strip for detail. For more detail I added microbeads from one of my kids stuffed animals. No I didn't destroy it, the dog accidentally got a hold of it, hee hee. See Sample H.

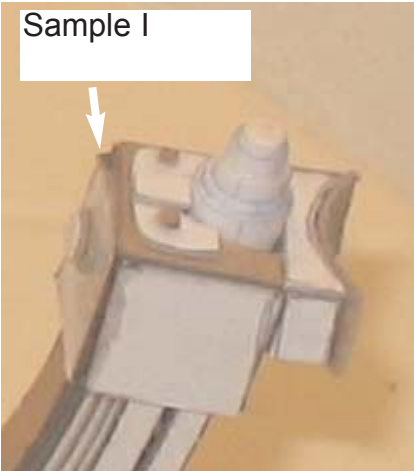
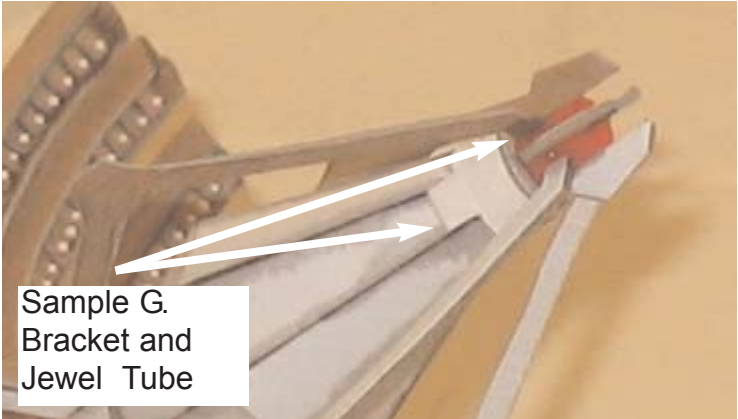
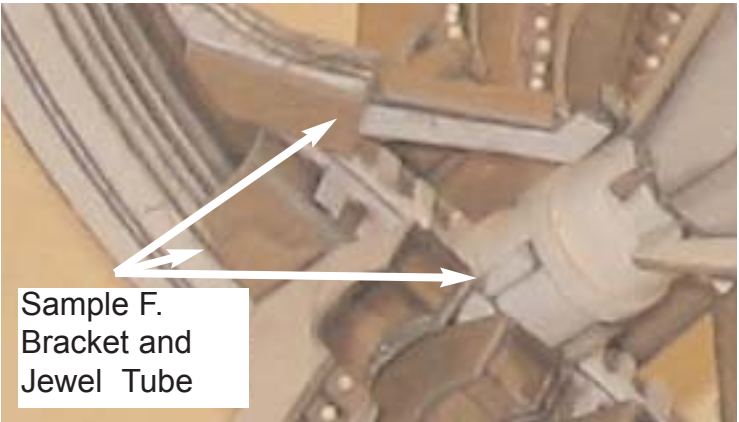
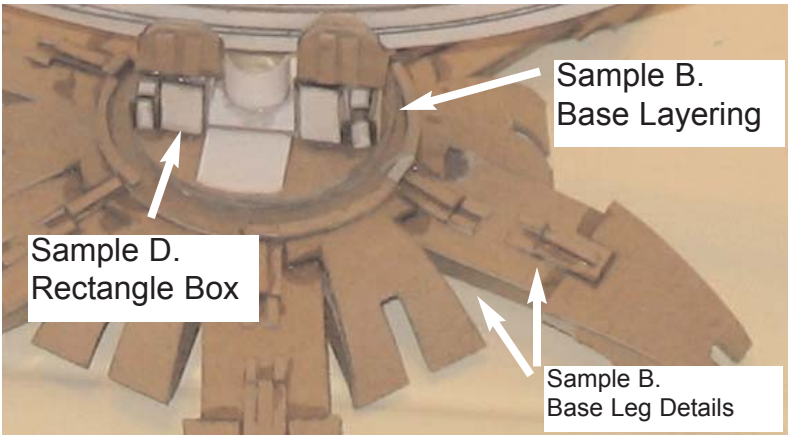
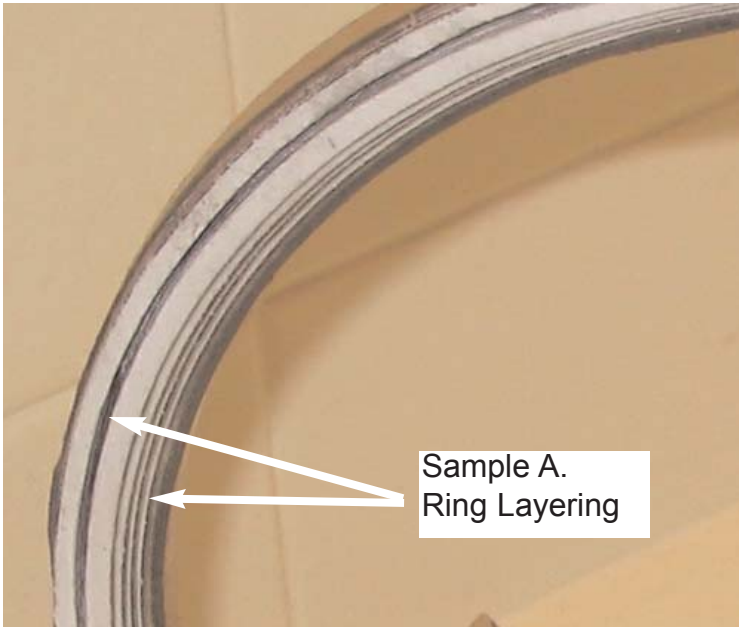
24. Now cut Jewel Brackets J & K and add them on as details for the Jewel base and top. See Sample G again.

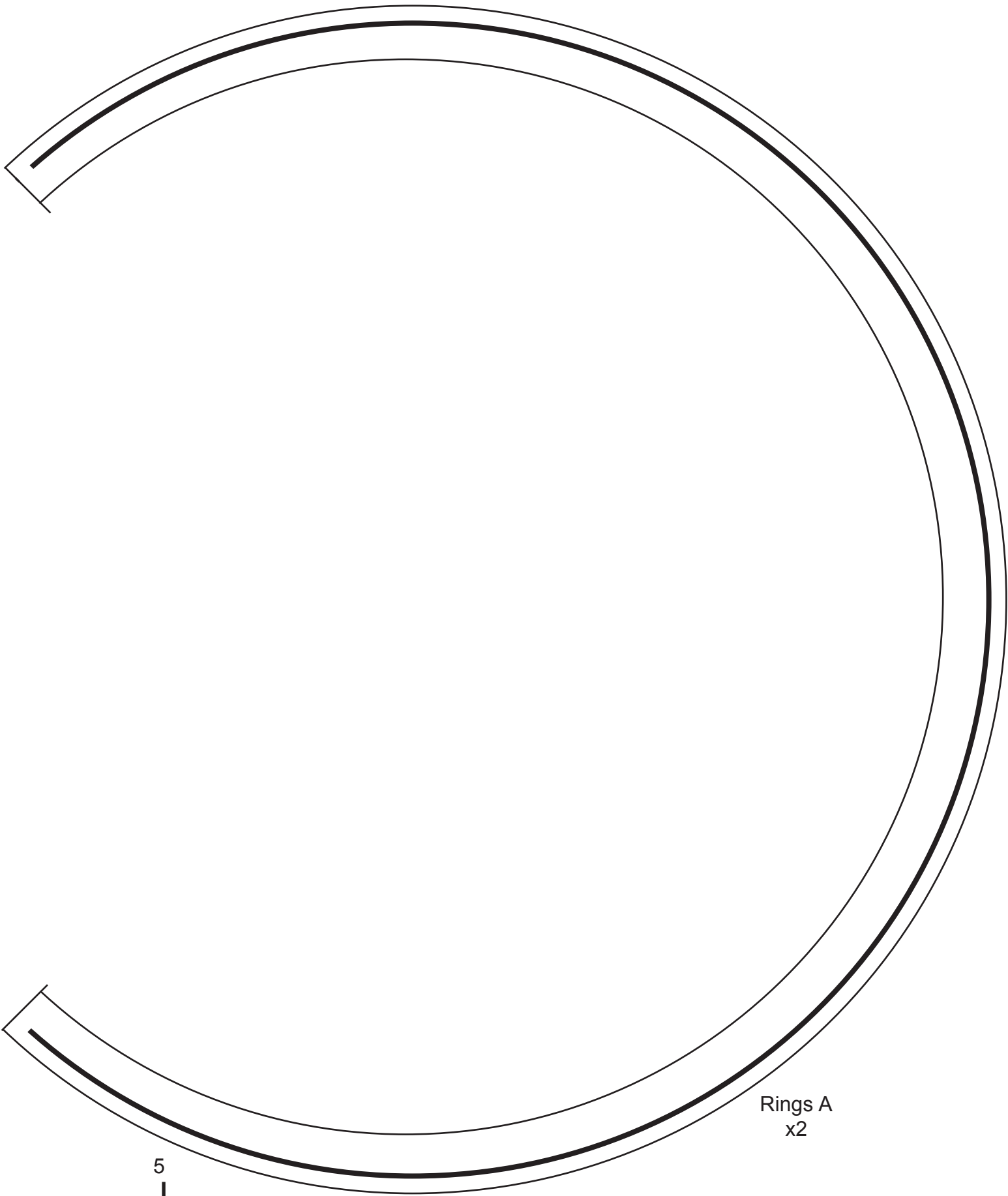
25. Now cut out the final piece Ring Ends A. The 4 squares together make a box open on both ends. On one end glue the square with the arch in it. Now layer on the detail to the arched square. the small circles get glued on the bottom of the square. Then the semi arch gets glued to the top of the box. Now slide the box onto the end of the rings and glue them in place. See Sample I.

26. For the final ends I cut out 5 strip of paper at varying widths. The thickest width starts out as the center. The next strips go in order of width thickness till you get to last. Glue this in place on the end within the square with the arch in it.

Now you should have a complete Necron Pylon. Have fun and enjoy!!!!

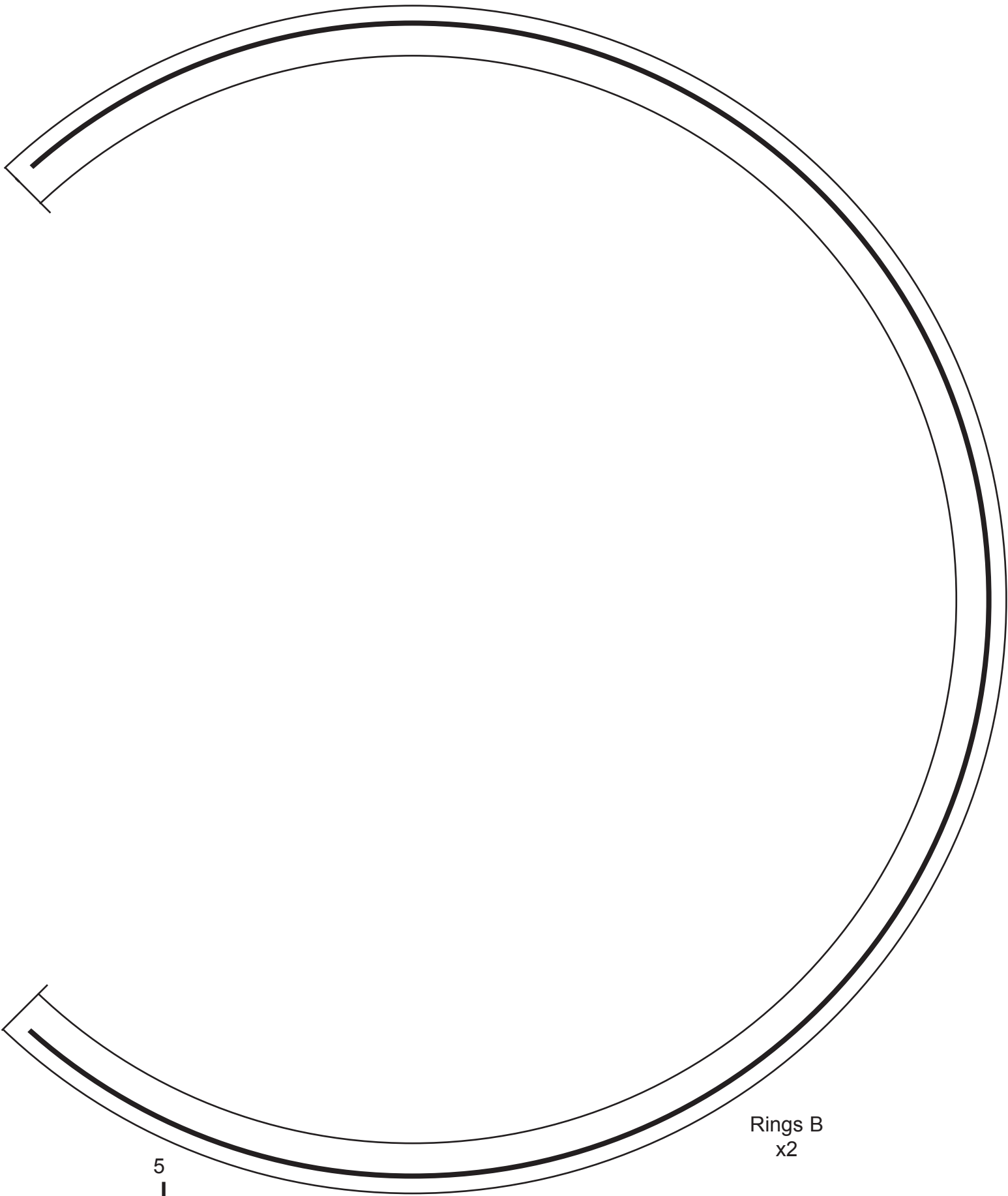
Should you have any questions please feel free to email me and I'll get back to you as soon as I can.





Rings A  
x2

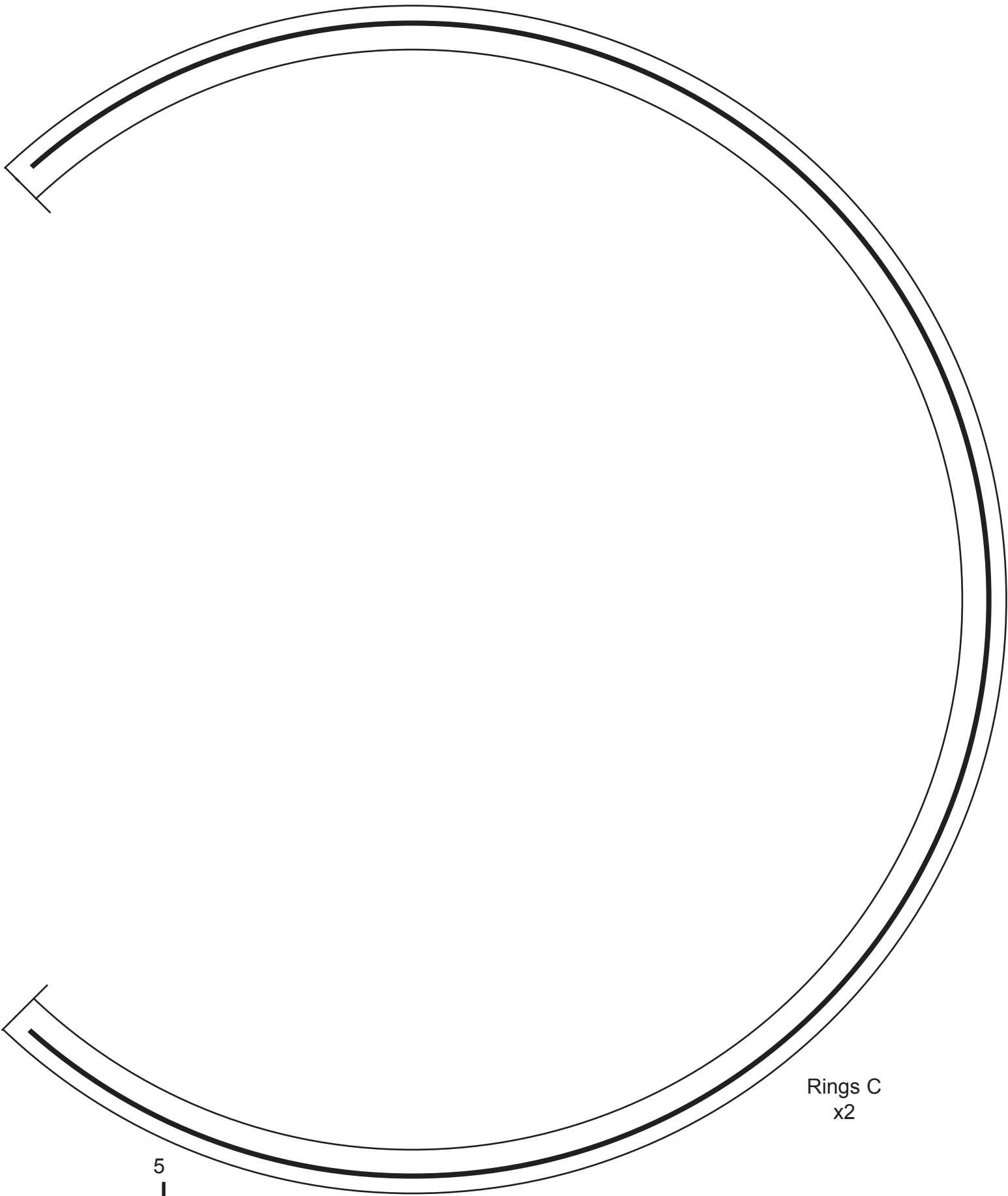




Rings B  
x2

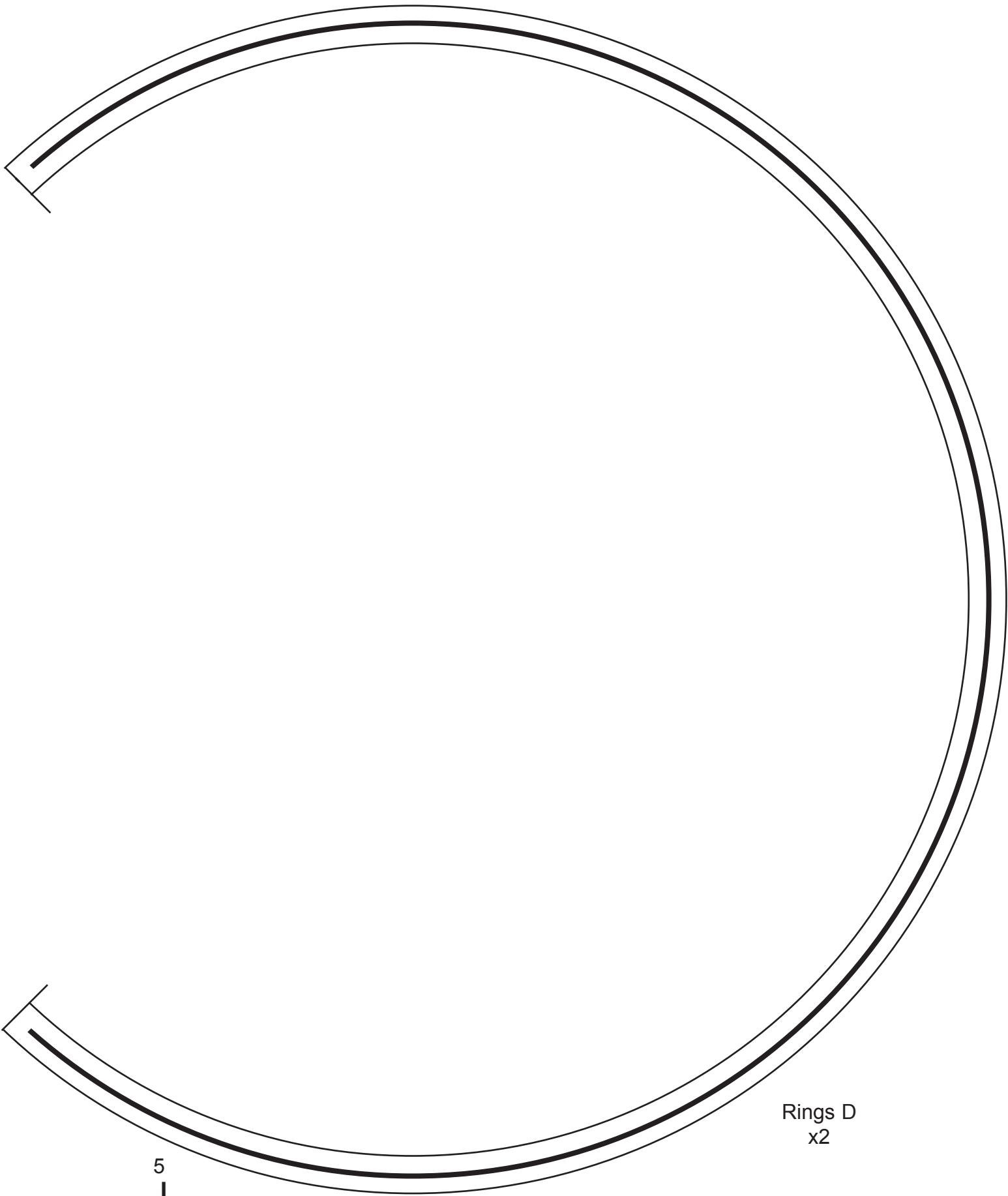


Necron Pylon  
goyo2303@earthlink.net  
October the 20th, 2007  
Letter Size Format  
(8.5x11) @ 100%



Rings C  
x2

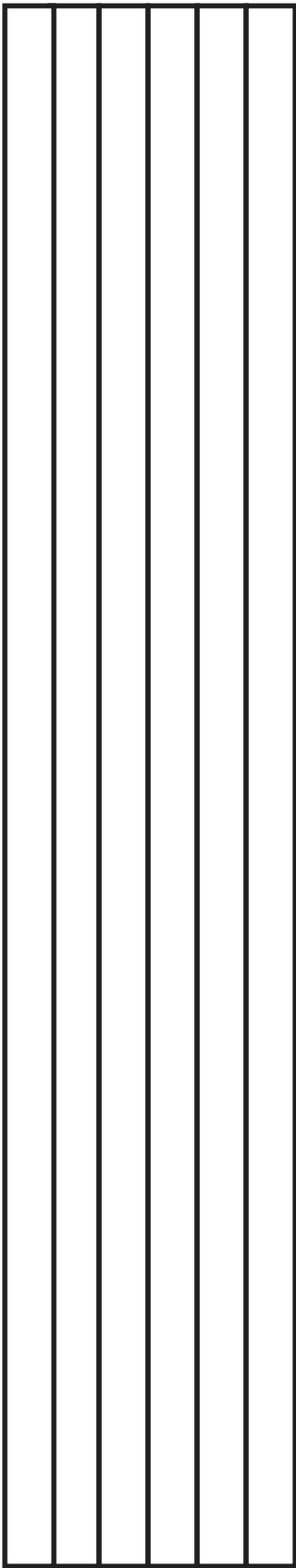




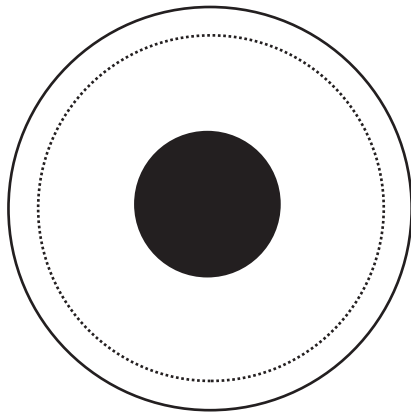
Rings D  
x2



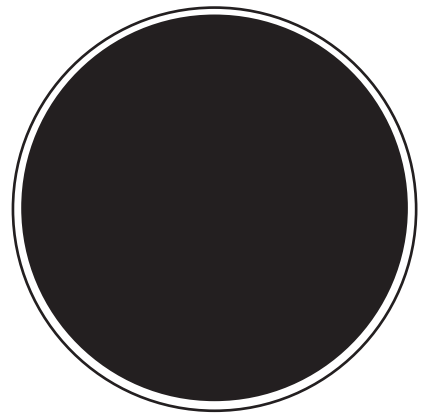




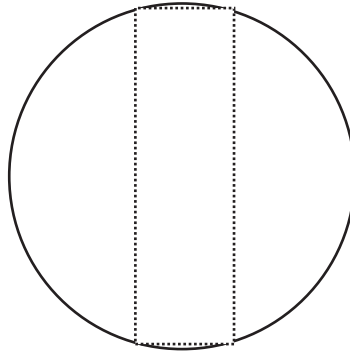
Rings E



Base A



Base B



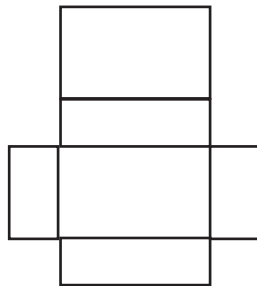
Base C  
x4



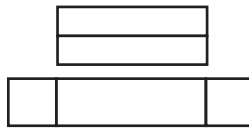
Base D



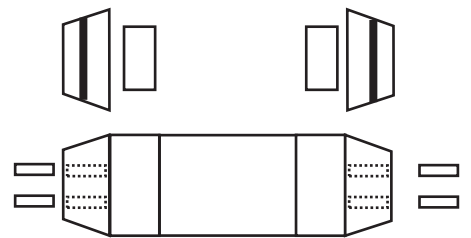
Base E



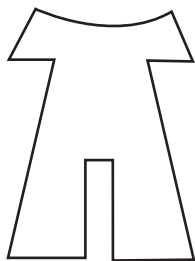
Base F  
x2



Base G  
x2



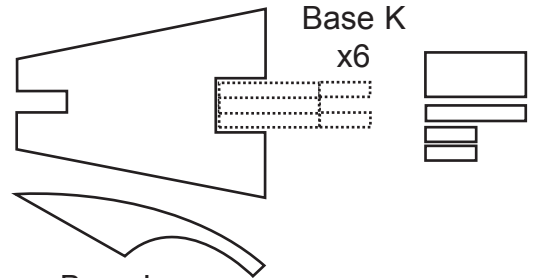
Base H



Base I  
x6

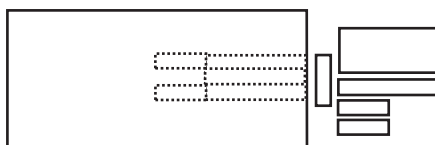


Base J  
x12



Base L  
x12

Base K  
x6

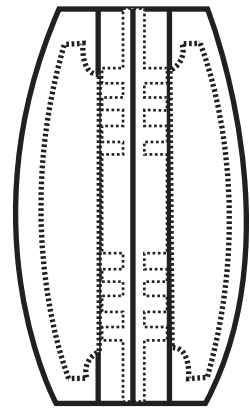


Base M  
x6



Base N  
x12





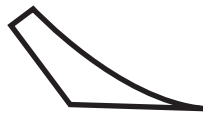
Jewel  
Bracket A



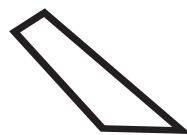
Jewel  
Bracket B



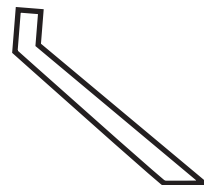
Jewel  
Bracket C



Jewel  
Bracket D  
x6



Jewel  
Bracket E  
x4



Jewel  
Bracket F  
x4

Jewel  
Bracket G  
x2



Jewel  
Bracket I  
x3



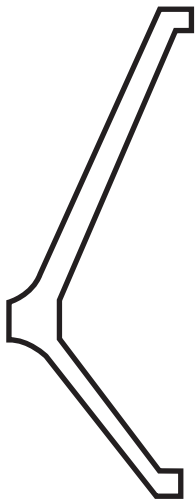
Jewel  
Bracket J  
x4



Jewel  
Bracket K  
x4



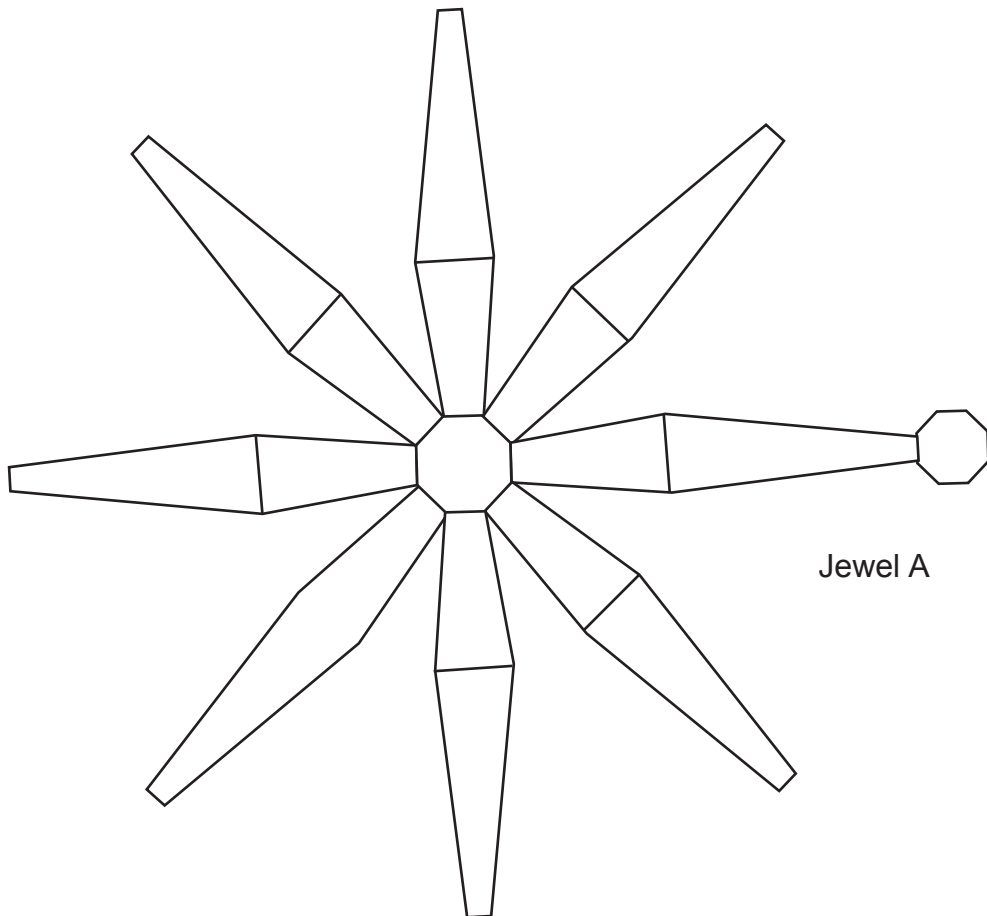
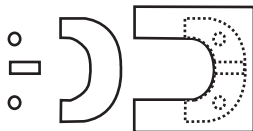
Jewel  
Bracket L  
x12



Jewel  
Bracket H  
x4



Ring  
Ends A  
x2



Jewel A

